



# MEASURE L BOND UPDATE

September 18, 2018

## Measure L – Overview

- Project Updates
- Program Schedule Review

## Measure L – Project Updates

- **Vinci Park Elementary School - FIS**
  - Phase 1 – Interior Work - Complete
  - Phase 2 – Exterior Work
    - In Progress:
      - FIS fencing
      - Install of exterior sink
- **Ruskin Elementary School - FIS**
  - On schedule to complete in October 2018
- **Piedmont Middle School - FIS**
  - On schedule to complete in October 2018

## Measure L – Project Updates

- **Ruskin Elementary School**

- Completed Portion of the Modernization Project:

- ADA parking upgrades
- Concrete replacement between buildings D and E/F
- ADA path of travel adjacent to FIS
- Minor ADA upgrades to student restrooms near Kitchen
- ADA drinking fountain replacement
- Replacement of main building entrance doors and frames
- ADA upgrades to restroom at Nurse's office

- In Progress:

- Replace existing fencing panels with decorative fence panels and fencing
- Flexible Instruction Space is on Schedule to complete in October

## Measure L – Project Updates



Ruskin - FIS

## Measure L – Project Updates



Ruskin - FIS

## Measure L – Project Updates

- **Piedmont Middle School**

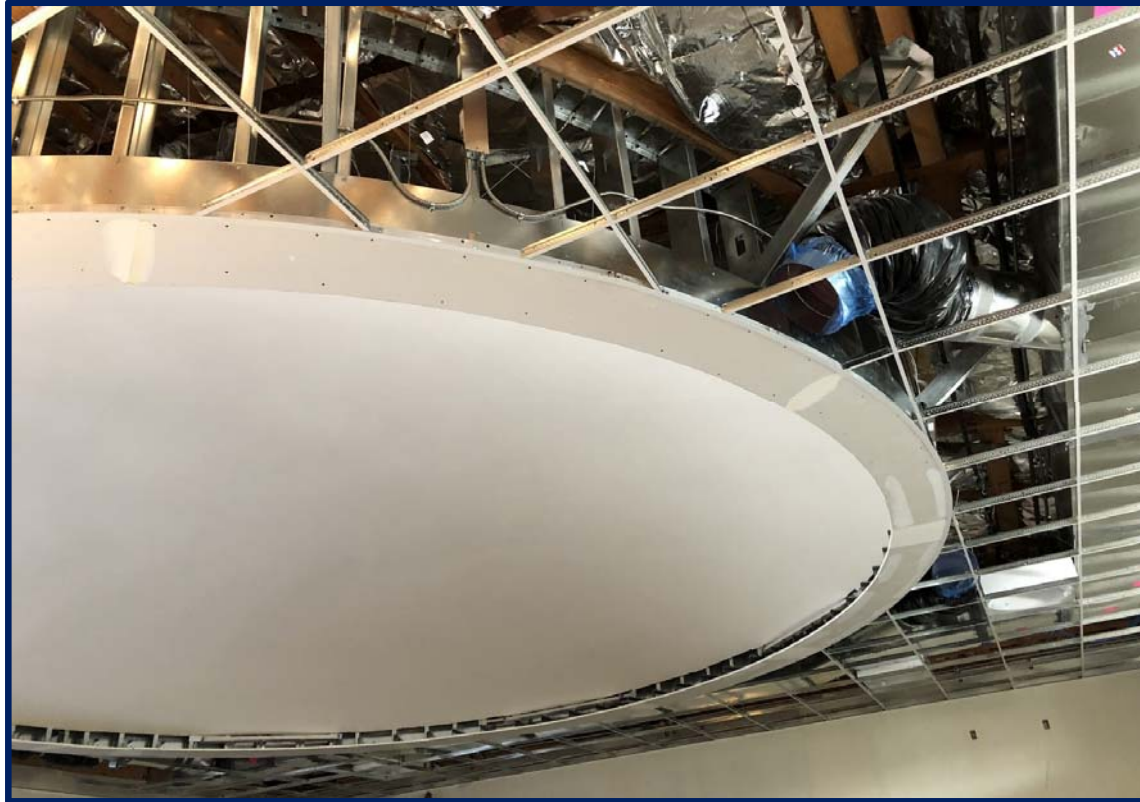
- Completed Portion of the Modernization Project:

- Minor ADA parking upgrades (stripping)
- Provide path of travel (ramp) to exterior student restrooms at building H
- ADA upgrades to student restrooms
- Staff restroom repairs
- ADA drinking fountain replacement
- Water bottle filling station

- In Progress:

- Fencing - gate replacement for ADA
- Flexible Instruction Space is on schedule on schedule to complete in October

## Measure L – Project Updates



Piedmont - FIS



## Measure L – Project Updates



Piedmont - FIS

## Measure L – Project Updates

- **Brooktree Elementary School**

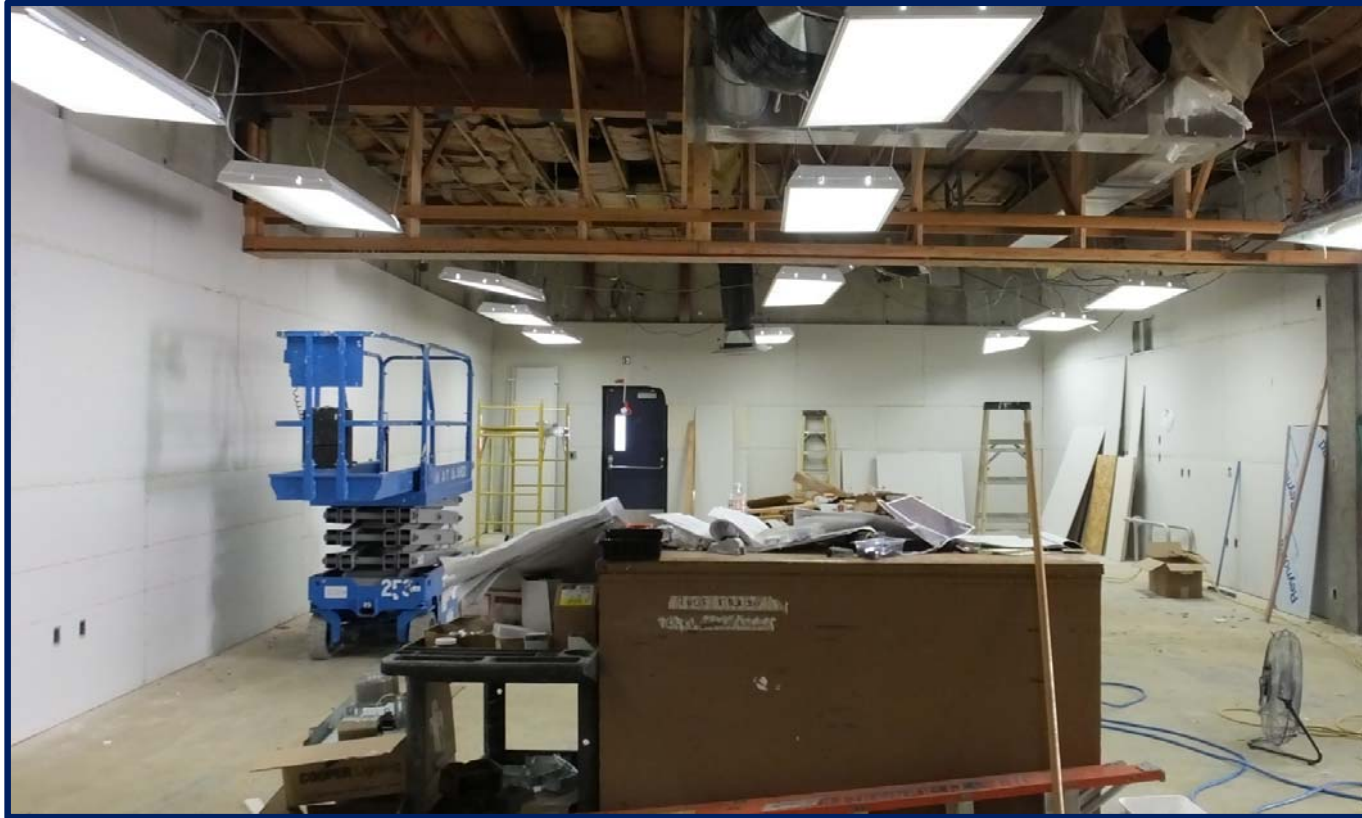
- Completed Portion of the Modernization Project:
  - Provide path of travel to exterior student restrooms at playground
  - ADA upgrades to exterior student restrooms
  - ADA drinking fountain replacement
  - ADA upgrades to staff restrooms
  - Interior painting
  - Entry window glass replacement
  - Flooring
- Flexible Instruction Space is on schedule to complete in October

## Measure L – Project Updates



Brooktree – FIS

## Measure L – Project Updates



Brooktree – FIS

## Measure L – Project Updates

- **Cherrywood Elementary School**

- Completed Portion of the Modernization Project:

- Interior Painting Project
- Flooring
- Removal of existing casework at main space (MPR)
- Tackable wall panels in main space (MPR)
- Classroom whiteboard

- FIS

- Submitted to DSA with approval excepted by late October
- Schedule to receive bids in early January 2019
- Recommendation of award at the January 15, 2019 Board Meeting
- Construction is scheduled to start April 2019

## Measure L – Project Updates



Cherrywood - Classroom

## Measure L – Project Updates

- **Toyon Elementary School**
  - Completed Portion of the Modernization Project:
    - Interior painting
    - Exterior painting
    - Flooring
    - Exterior door replacement
    - Stage partition repair
    - Sink repair at Classroom 1
    - Toilet repair/replacement TK restrooms
    - Painting of Classroom windows

## Measure L – Project Updates



Toyon Exterior



## Measure L – Project Updates

- **Toyon Elementary School - continue**

- FIS

- Submitted to DSA 8/6
- Receive bids 10/30
- Recommendation of award at the November 13, 2018 meeting
- Start construction November 2018
- Completion February 2019

## Measure L – Project Updates

- **Morrill Middle School**

- Completed Modernization Project:

- Site concrete replacement at Administration entrance
- Site concrete replacement at northwest stairs
- Site concrete replacement between B & C
- Provide path of travel; ramp to blacktop area
- Upgrade ADA parking
- Minor ADA upgrades to student restrooms
- ADA upgrades to staff restrooms
- Concrete slab repair at buildings B, C, D, and E
- Interior painting
- Reconfigure of Library space
- Flooring

## Measure L – Project Updates

- **Morrill Middle School - continue**

- In Progress:

- Fencing is 80% complete
- Flexible Instruction Space is on schedule for completion in late October

## Measure L – Project Updates



Morrill - Art Classroom

## Measure L – Project Updates



Morrill - Science Classroom

## Measure L – Project Updates



Morrill - FIS

## Measure L – Project Updates



Morrill - FIS

## Measure L – Project Updates



Morrill - FIS



# Measure L – Program Schedule

Construction & Furniture Projects																																																							
Construction Legend																								Furniture Legend																															
	Design		Preconstruction		Furniture Design		Furniture Ordered																																																
	DSA Review		Construction		Quote Pricing		Lead Time																																																
	Bid		Start of School		PO Generated		Furniture Received and Placed																																																
	Award		Punch List																																																				
Construction Projects																								2019																															
2018						January						February						March						April						May						June						July						August							
September				October				November				December				Week				Week				Week				Week				Week				Week				Week				Week				Week							
1	2	3	4	1	2	3	4	1	2	3	4	1	2	3	4	1	2	3	4	1	2	3	4	1	2	3	4	1	2	3	4	1	2	3	4	1	2	3	4	1	2	3	4	1	2	3	4	1	2	3	4	1	2	3	4
<b>Vinci Park</b>																																																							
FIS Exterior																																																							
<b>Ruskin</b>																																																							
FIS																																																							
<b>Piedmont</b>																																																							
FIS																																																							
Parking Improvements																																																							
<b>Brooktree</b>																																																							
Flooring																																																							
Modernization																																																							
FIS																																																							
<b>Cherrywood</b>																																																							
Interior Painting																																																							
Flooring																																																							
FIS/Modernization																																																							
<b>Toyon</b>																																																							
Interior/Exterior Painting																																																							
Flooring																																																							
FIS/Modernization																																																							
<b>Morrill</b>																																																							
Flooring																																																							
Modernization																																																							
FIS																																																							
<b>Furniture Projects</b>																																																							
FIS Furniture - Phase 4																																																							

A photograph of a construction site. A large white sheet is hung across the wall, partially covering a window. In the foreground, there are two tall stacks of wooden pallets, a blue barrel, a grey pallet jack, and a metal cart. The text "Thank You" is overlaid in the center of the image.

Thank You